



PlumbMaster, Inc.



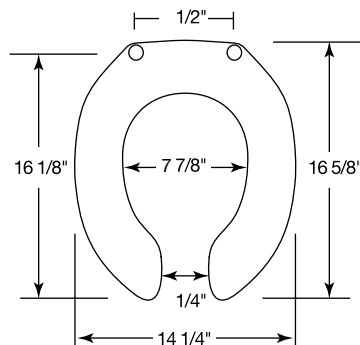
NEW PRODUCT

Bemis Toilet Seat

FEATURING STA-TITE FASTENING SYSTEM

- Open Front Less Cover for Round Bowl
- Heavy Weight and Injection Molded of Solid Plastic
- Featuring STA-TITE® Commercial Fastening System, One Piece Nut and Integrated Washer
- Stainless Steel, Self-Sustaining External Check Hinge Holds Seat in Any Raised Position Up to 11° Beyond Vertical
- OEM Ref. No. 955SSCT

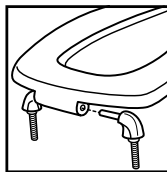
Cat. No. 45265



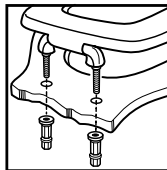
Ring thickness is 1"
 Ring thickness including the bumper is 1-3/16"



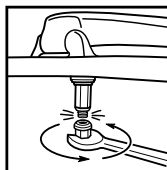
STATITE®



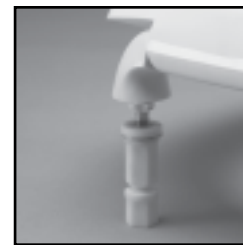
Assemble hinges.



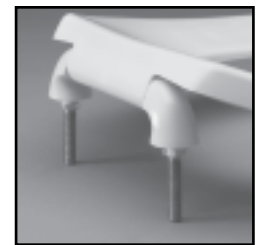
Finger-tighten fastening nuts.



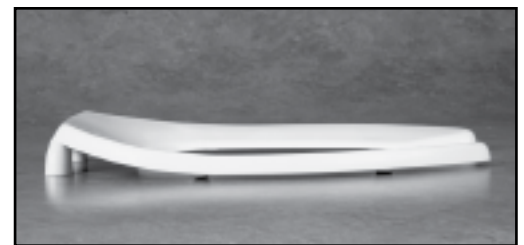
Using wrench, tighten until lower portion shears off.



STA-TITE®, COMMERCIAL FASTENING SYSTEM™, ONE-PIECE INTEGRATED NUT AND WASHER



CONCEALED CHECK HINGE



CONTOURED SEAT

Phone: 1-800-523-5130 • Fax: 1-800-338-1867 • www.plumbmaster.com