



**PlumbMaster, Inc.**



# NEW PRODUCT

## Reversible Ceramic Disc Cartridge with Balancing Spool Assembly

FOR NEW STYLE PRESSURE BALANCED ETERNITY VALVES  
(MARCH 2009 - PRESENT)

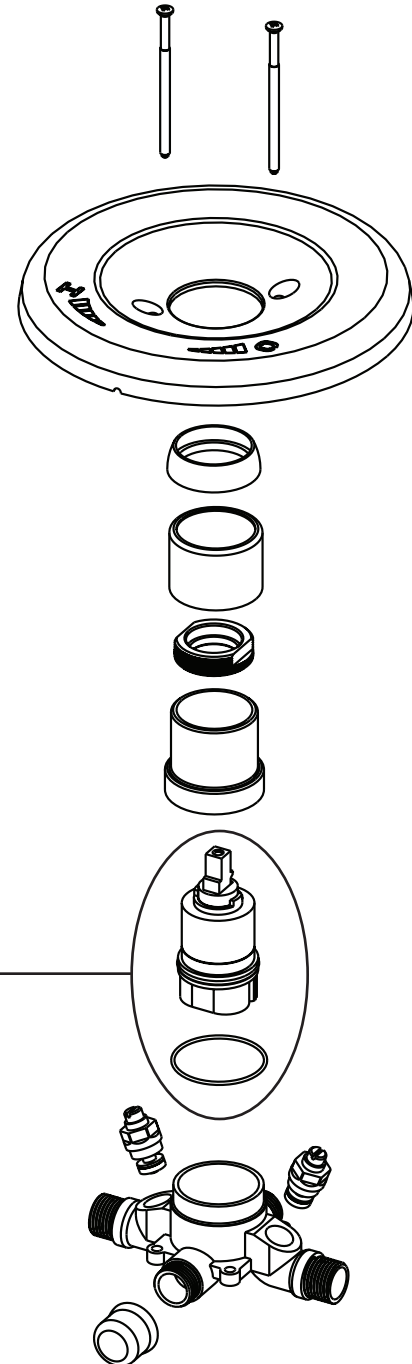


- Ideal for Use in Back-to-Back Shower Installations
- May Also Be Used to Correct a Hot/Cold Reversal Resulting from Connecting the Supply Lines to the Incorrect Sides of the Valve
- Used On PlumbMaster Eternity® Pressure Balance Tub and Shower Fixtures Cat. Nos. 33388, 33389, 33395, 33396

Cat. No. 31625



Ceramic Disk Cartridge with housing made from Noryl® GFN3 Resin. This durable, corrosion free material helps reduce the problems of mineral build-up and eliminates corrosion that interferes with the operation of metal parts.



Phone: 1-800-523-5130 • Fax: 1-800-338-1867 • [www.plumbmaster.com](http://www.plumbmaster.com)