



PlumbMaster, Inc.



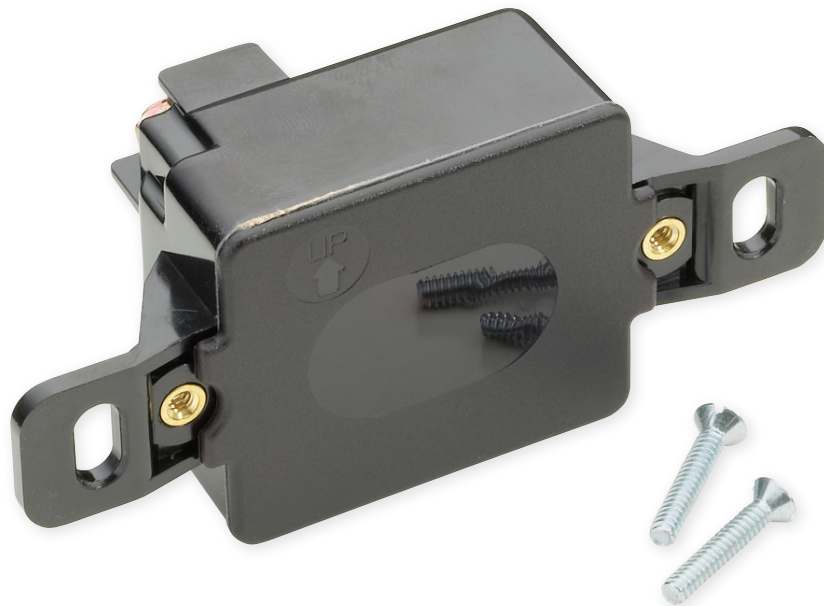
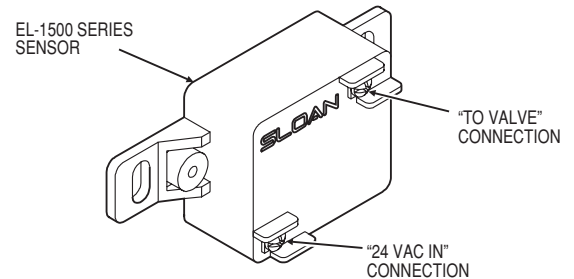
NEW PRODUCT

Sloan Optima® Lavatory Sensor

WITH 30 SECOND TIME OUT

- When the Sensor Detects a User, a Slowly Flashing Red Light Appears in the Sensor Window
- After Two Seconds, the Light Flashes Rapidly and the Sensor Immediately Activates the Solenoid Valve to Begin Water Flow
- The Solenoid Valve Remains Open As Long As the User is Detected and For Two Seconds After the User is No Longer Detected
- The Sensor is Set to Activate the Solenoid for a Maximum of Thirty Seconds Before Automatically Shutting Off
- Used on Sloan Optima ESS-2000/3000 Series Sensor Operated Scrub Sink Systems
- OEM Ref. No. EL-1500-LL-T

Cat. No. 70506



Phone: **1-800-523-5130** • Fax: **1-800-338-1867** • www.plumbmaster.com