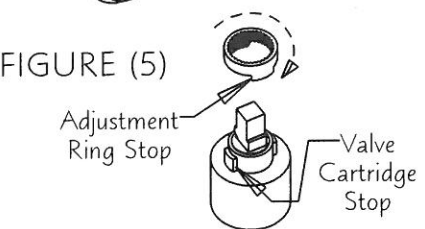
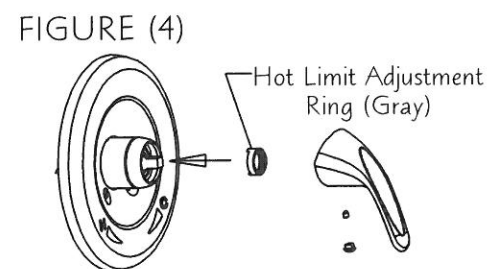
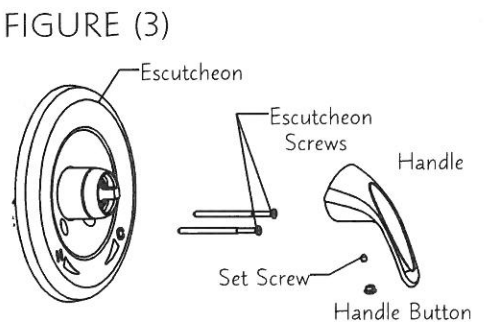
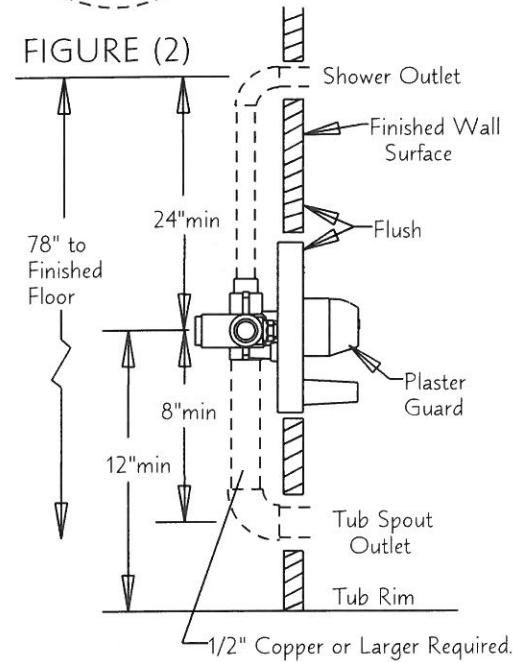
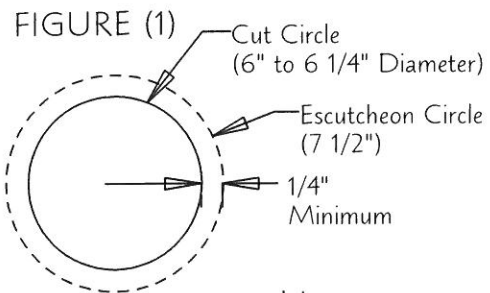


SINGLE CONTROL PRESSURE BALANCE TUB/SHOWER UNITS



WALL PREPARATION: (Figure 1)

- 1.) Determine exact valve location on finished wall. Refer to figure (2) for recommended valve height location.
- 2.) Once valve location is determined, draw a (6" to 6 1/4") diameter circle around the location point and then cut a (6" to 6 1/4") diameter hole.

OR

Use the escutcheon (cover plate) as a template and trace a circle around the valve location. Then cut a hole staying at least 1/4" inside the escutcheon circle. See Figure (1).

- 3.) Cut holes for Shower Head and Tub Spout outlets. Refer to figure (2) for recommended height locations.

VALVE INSTALLATION: (Figure 2)

- 4.) Valve Orientation: Make sure the valve is properly oriented. The word "UP" on the valve body should be pointed towards the shower riser. The word "DOWN" should be pointed towards the tub spout outlet.
- 5.) Valve Depth: Insert valve assembly with plaster guard into cut hole in wall. The flat surface marked "IMPORTANT" on the plaster guard should be FLUSH with the finished wall surface. DO NOT install valve assembly too deep in wall cavity.
- 6.) Valve Plumbing: Use teflon tape or pipe thread sealant on all threaded connections. DO NOT OVER HEAT valve body if soldering connections.

* 1/2" Copper or larger required for drop from valve to tub spout to prevent back pressure that will cause leakage from shower head when discharging water through tub spout.

TRIM INSTALLATION: (Figure 3)

- 7.) After valve is properly plumbed in wall, remove plaster guard.
- 8.) Install escutcheon plate to valve using 3 1/4" oval head screws. CAUTION: Over tightening screws will deform escutcheon plate.
- 9.) Assemble handle onto valve stem and tighten handle screw with 3/32" hex wrench. Insert handle button into handle with Red on left, and Blue on the right.

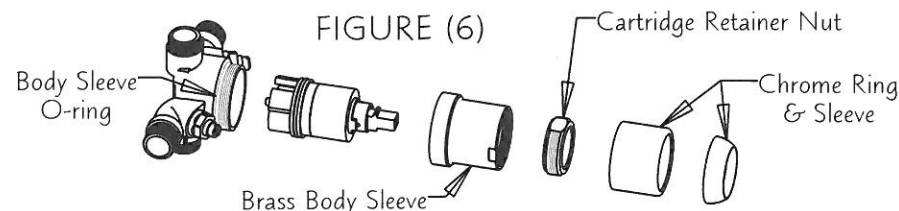
HOT LIMIT STOP ADJUSTMENTS: (Figure 4 & 5)

The hot limit stop is a device that is used to limit the cartridge travel to the extreme hot position.

- 1.) Remove handle using 3/32" hex wrench.
- 2.) Remove (gray) hot limit adjustment ring from valve cartridge.
- 3.) Turn valve on and adjust to maximum desired water temperature.
- 4.) Reposition gray hot limit adjustment ring so that the ring stop touches the cartridge stop (See Figure 5). This will prevent the valve stem from rotating any further towards the full hot position.
- 5.) Re-assemble handle.

CARTRIDGE REMOVAL: (Figure 6)

- 1.) Remove chrome retainer ring and sleeve.
- 2.) Unscrew brass cartridge retainer nut and brass body sleeve.
- 3.) Remove pressure balance single control cartridge.
- 4.) Inspect body sleeve o-ring to make sure it is not cut or torn. If o-ring is damaged, replace before re-assembling Tub/Shower valve.



PRODUCT WARRANTY

With exception of items listed below, this product has a limited warranty against defects in materials or workmanship for a period of one year from the date of purchase.

Exceptions:

- 1.) Faucet valve cartridges have a limited warranty for a period of 100 years from the date of manufacture. This date is stamped on the valve cartridge.
- 2.) Product finish have a limited warranty for a period of 100 year from the date of installaion. Failure to follow the cleaning instructions listed below voids all finish warranty. Damage due to accidents or installation is not warranted. (Oil Rub Bronze and Matte Black have a 1 year finish warranty).

Warranty is limited to replacement of defective components or units. Associated replacement or repair labor costs are NOT included. This warranty only pertains to single dwelling residential use. Valves used for other than single dwelling residential use are covered by a 1 year limited warranty from the date of purchase.

CLEANING INSTRUCTIONS

Use only a clean, soft cloth, water, and mild hand soap to clean unit.

WARNING

Do NOT use abraasive cleaners, chemicals, or abraasive cleaning pads to clean fixture. A very hard protective coating has been applied to this product to maintain it's appearance, but this product could be damaged with improper cleaning. Failure to following cleaning instructions will void product warranty.



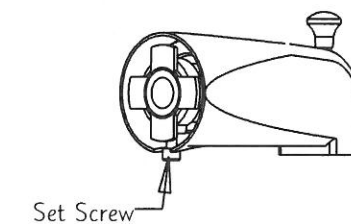
CALIFORNIA PROPOSITION 65:

WARNING: This product can expose you to chemicals including lead, which is known to the State of California to cause cancer and birth defects or other reproductive harm. For more information go to www.P65Warnings.ca.gov.

Wash hands after installation, repair, or removal of this product.

TUB SPOUT INSTALLATION

SLIP FIT INSTALLATION: Remove all burrs and sharp edges from copper pipe. Assemble tub spout onto copper pipe. Caution: Do not cut or tare tub spout O-ring. Tighten set screw and check all connections for for leaks.



IRON PIPE INSTALLATION: Unscrew and remove slip fit adapter from tub spout. Apply teflon tape or paste to pipe threads. Assemble tub spout and check all connections for leaks.

