

**CHICAGO FAUCETS**  
a Geberit company

2100 South Clearwater Drive  
Des Plaines, IL 60018  
Phone: 847-803-5000  
Fax: 847-803-5454  
www.chicagofaucets.com

**REPAIR PARTS**

FITTING NO.

**857-665PSHABCP**

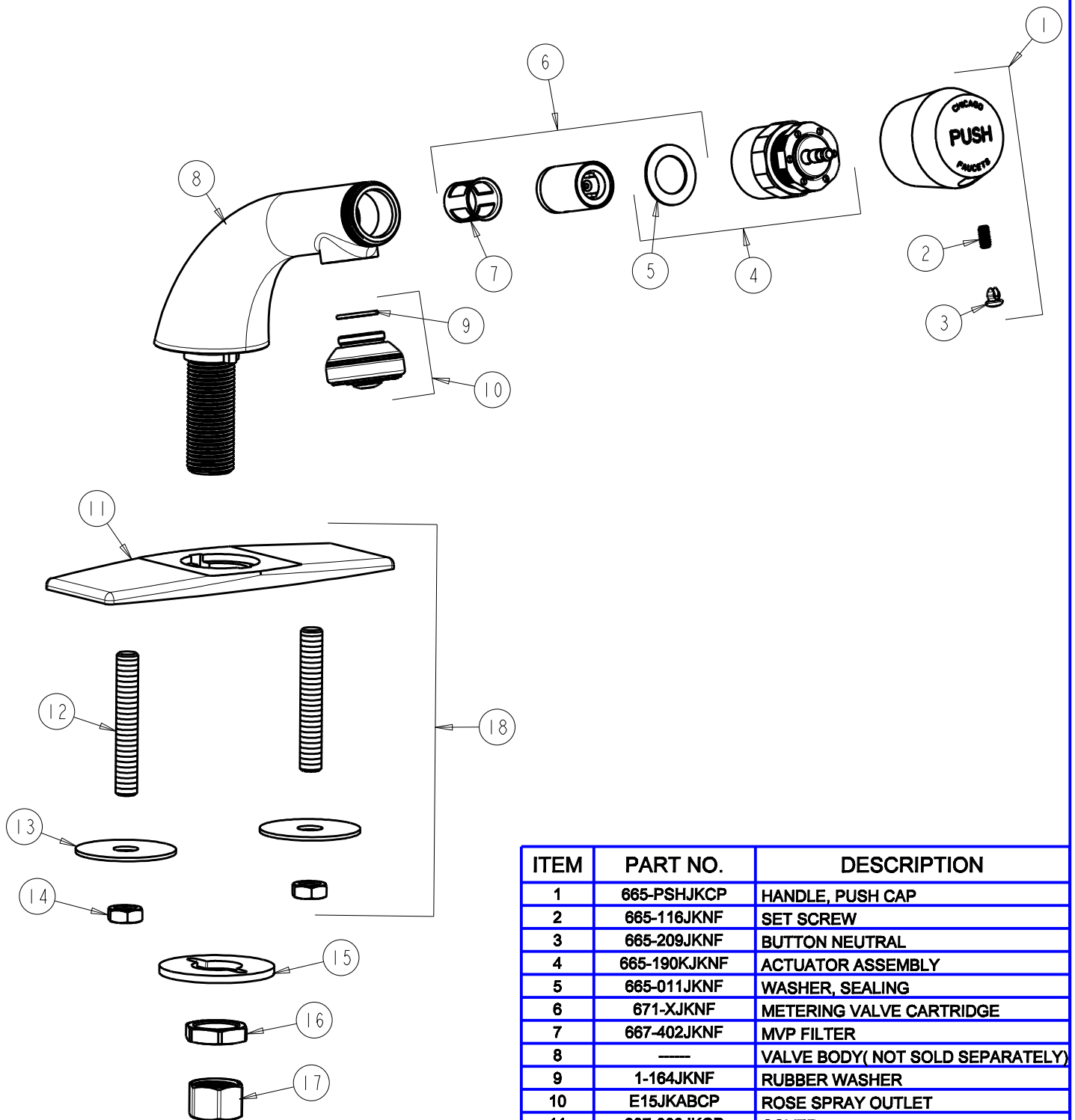
SUBMITTED MODEL NO.

ITEM NO.

BY: SID DATE: 07-02-12

CHK: *[Signature]* REV:

**FOR TECHNICAL ASSISTANCE**  
**1-800-TEC-TRUE (1-800-832-8783)**



ITEM	PART NO.	DESCRIPTION
1	665-PSHJKCP	HANDLE, PUSH CAP
2	665-116JKNF	SET SCREW
3	665-209JKNF	BUTTON NEUTRAL
4	665-190KJKNF	ACTUATOR ASSEMBLY
5	665-011JKNF	WASHER, SEALING
6	671-XJKNF	METERING VALVE CARTRIDGE
7	667-402JKNF	MVP FILTER
8	---	VALVE BODY( NOT SOLD SEPARATELY)
9	1-164JKNF	RUBBER WASHER
10	E15JKABCP	ROSE SPRAY OUTLET
11	807-003JKCP	COVER
12	634-215JKRBF	STUD, 3/8-24 UNF X 2.5
13	634-124JKNF	WASHER, STEEL 1.75 X .43 X .06
14	689-113JKRBF	NUT, 3/8-24 UNF X .56 X .22
15	807-112JKNF	WASHER
16	49-004JKRBF	LOCKNUT
17	49-005JKRBF	COUPLING NUT
18	807-003KJKCP	COVER ASSEMBLY