

**For Residential and Commercial Applications**

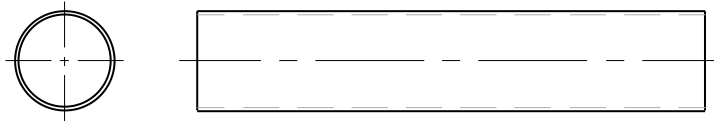
Job Name		Engineer / Architect	
Job Location		Wholesaler	
Submittal Date		Contractor	

**8489 C / 8491 C Chrome Plated Brass Cover Tube**

**Uses:** Cover tube for 1/2" nom copper tube.

**Design Features:**

- **Protects** the pipe from environmental conditions
- **Transitions** a supply connection seamlessly

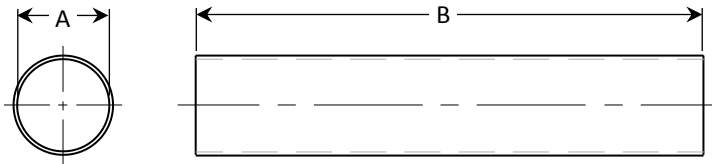


<b>MATERIAL SPECIFICATIONS</b>	
<b>Tube</b>	Copper, chrome-plated

**Part Listing:**

- 8489 C                      3-1/2" length cover tube for 1/2" nom copper tube
- 8491 C                      36" length cover tube for 1/2" nom copper tube

<b>PART DIMENSIONS (Inches)</b>			
<b>Model</b>	<b>DIA. A</b>	<b>DIM. B</b>	<b>Wall</b>
8489 C	.64	3.50	.022
8491 C	.64	36.00	.022



*This specification and all information contained herein is the confidential and exclusive property of BrassCraft Manufacturing, and shall not be disclosed to others without the written consent of BrassCraft Mfg. This specification must be returned to BrassCraft Mfg if requested.*

